

# Silent Letters



L.O. To investigate, spell and read words with silent letters

A silent **b** occurs after **m**, before **t**.

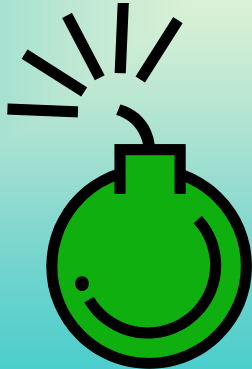
lamb



thumb



bomb



debt

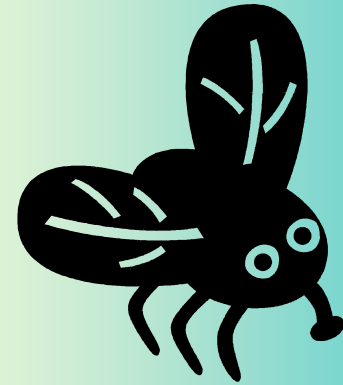


A silent **k** and a silent **g** are found  
before **n**.

**g**nome



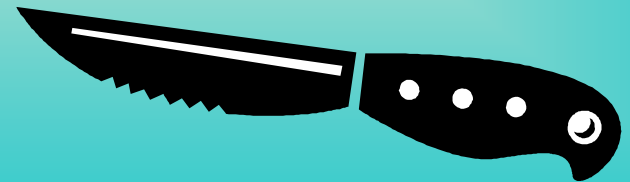
**g**nat



**k**nee



**k**nife

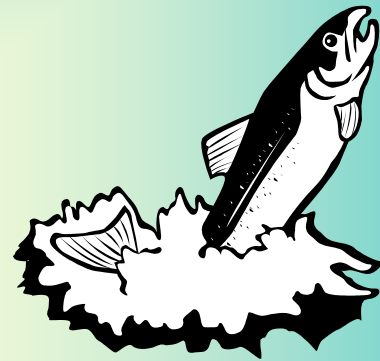


A silent **l** follows vowels **a, o, u**.

cal**l**f



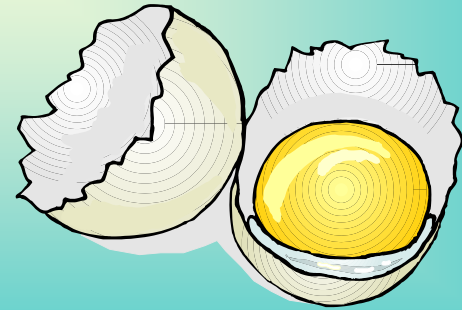
sal**l**mon



ch**l**alk



yol**l**k

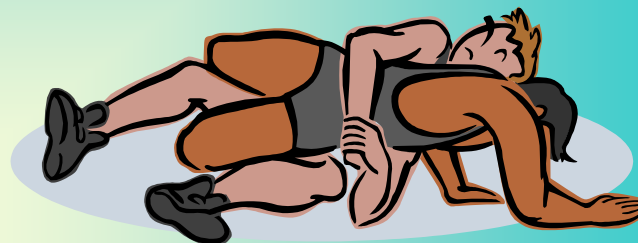


# A silent **w** often goes before **r**

**w**rapper



**w**restle



**w**rist



**w**reck

