

Monet and the Impressionist Movement

Claude Monet was a French painter and founder of the Impressionist movement. Monet is known for painting views of waterlilies from his garden in Giverny. His painting *Impression, soleil levant* (1872) gave its name to the Impressionist movement.



Biographical details:

Dates:	1840—1926
Nationality:	French
Born in:	Paris
Movement:	Impressionism

Key facts about Impressionism:

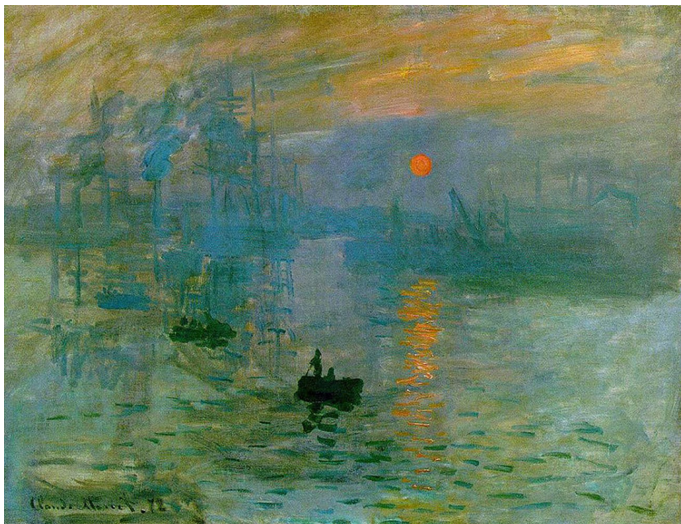
In the 19th century, a group of artists in France started to draw and paint landscapes and scenes of everyday life.

The impressionist artists were trying to give an 'impression' of what the person, object or landscape looked like to them, rather than to paint a realistic picture.

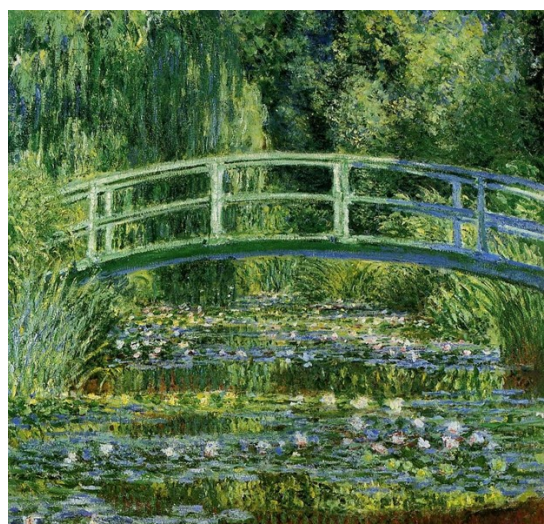
They generally painted using thick paint and small brushstrokes, often outdoors or '*en plein air*'.

They sometimes painted the same scene many times to show how it changed with the light or the time of day.

Many impressionist painters were inspired by Japanese print makers such as Hokusai.



Impression, Sunrise (1872)



Waterlilies and Japanese Bridge (1899)