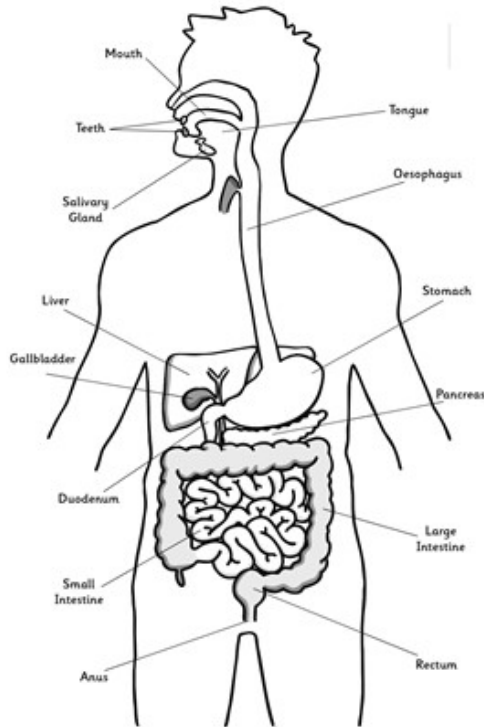




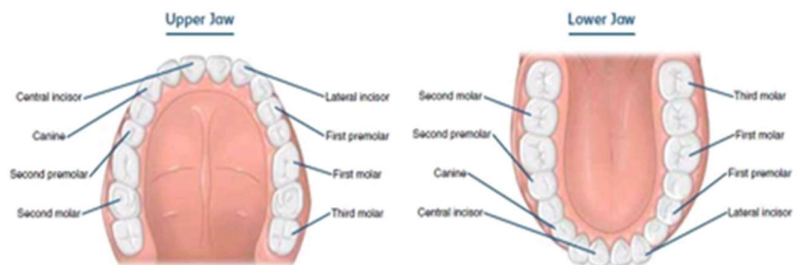
## Knowledge Organiser for Year 3/4 Science: Animals Including Humans

Key ideas:	
The Human Digestive System	The <b>human digestive system</b> is the group of organs that take in food and liquids and break them down into substances that the body can use for energy, growth, and repair
Food chain	A <b>food chain</b> shows how plants and animals get their energy.



Tier 3 vocabulary: The digestive system	
<b>Oesophagus</b>	The <b>oesophagus</b> is also called the gullet or food pipe. this muscly tube transports the food from the throat to the stomach.
<b>Small intestine</b>	The <b>small intestine</b> is the main site where food is digested.
<b>Large intestine (colon)</b>	The <b>large intestine (colon)</b> absorbs water from digestive waste and transmits the waste material from the body.
<b>Enzymes</b>	<b>Enzymes</b> are molecules within the body that set off certain chemical changes.
<b>Glands</b>	<b>Glands</b> are organs that release fluids to be used in different parts of the body. E.g. the sweat glands produce and release the fluid sweat.
<b>Peristalsis</b>	<b>Peristalsis</b> is the involuntary movement of the muscles that moves food through the digestive tract.

Types of teeth and their functions	
<b>Incisor</b>	The <b>incisor</b> teeth are the narrow-edged teeth at the front of the mouth, adapted for cutting. In humans there are four incisors in each jaw.
<b>Canine</b>	The <b>canine</b> teeth are used for ripping and tearing tough foods, such as meat. Humans have a total of four canine teeth, two located in the top jaw, either side of the incisor teeth and two located in the bottom jaw either side of the incisor teeth.
<b>Premolar</b>	The <b>premolar</b> teeth are used for chewing and grinding food. Adults have a total of four premolar teeth on each side of their mouths, two on the upper and two on the lower jaw.
<b>Molar</b>	The <b>molar</b> teeth are used for chewing and grinding food. They have a large, flat biting surface to chew, crush and grind food. Humans have 12 permanent molar teeth.



Energy pyramid

